



产品手册

PRODUCTS SELECTION

XPOMATPOH 1521 UHPLC

XPOMATPOH 1521 UHPLC



Ultra-High Performance Liquid
Chromatography System

Ultra-high performance

a new benchmark of efficiency higher-efficiency LC solutions

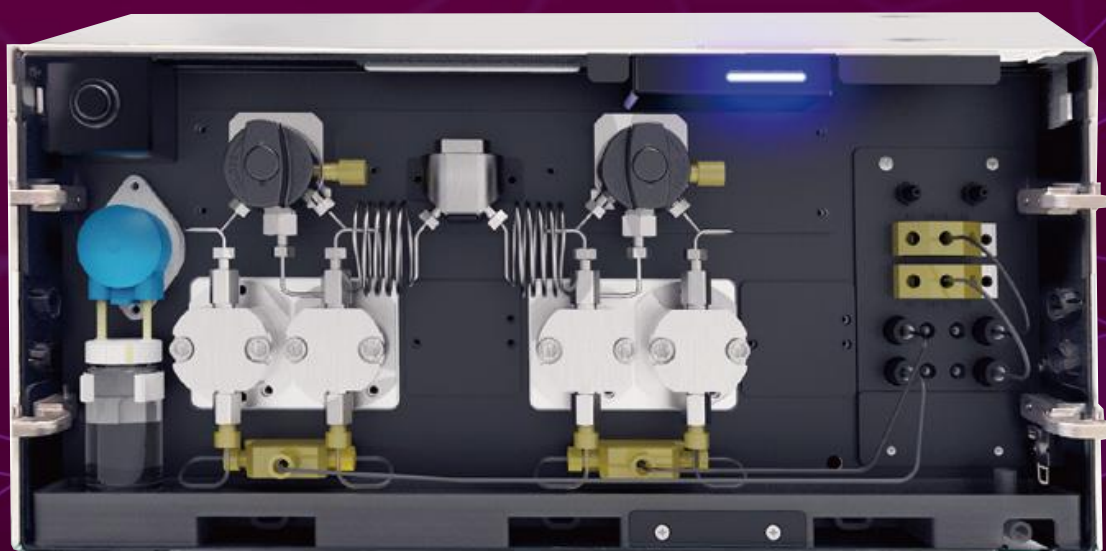
Meeting more application scenarios and analytical needs

- A new benchmark for China-made liquid chromatography
- Higher performance, higher efficiency, and higher cost-effectiveness
- Ultra-high pressure resistance enables a big increase in analysis efficiency

New generation of UHPLC

Unparalleled analytical efficiency experience

- Ultra-high pressure resistance up to 16000 PSI (1100 Bar) brings ultra-high separation efficiency
- Ultra-low dispersion total reflection flow cell significantly reduces the extra-column volume, improves sensitivity, and fully satisfies ultra-high performance analysis
- Ultra-stability and lower flow rate enable small proportions to operate stably, accurately, and durably



| Model | Performance Parameter | Weight | size |
|-------|--|--------|---------------------------------|
| P12 | Constant flow isocratic pump (10500 psi) | 16 Kg | 550 mm(D)× 396 mm(W)× 196 mm(H) |
| P20 | Binary pump (10500 PSI) | 19 Kg | 550 mm(D)× 396 mm(W)× 196 mm(H) |
| P22 | Binary pump (10500 PSI, 2CH degassing unit) | 24 Kg | 550 mm(D)× 396 mm(W)× 196 mm(H) |
| P40 | Quaternary pump (10500 PSI, 4CH degassing unit) | 18 Kg | 550 mm(D)× 396 mm(W)× 196 mm(H) |
| P60 | Dual ternary gradient pump (10500 PSI, 6CH degassing unit, ternary gradient valve) | 24 Kg | 550 mm(D)× 396 mm(W)× 196 mm(H) |
| UP25 | Binary pump (16000 PSI, 2CH degassing unit, ternary gradient valve) | 24 Kg | 550 mm(D)× 396 mm(W)× 196 mm(H) |
| P10 | Isocratic pump 10500 PSI / >72Mpa # Small volume | 8 Kg | 320 mm(D)× 135 mm(W)× 147mm(H) |
| P42 | Quaternary pump 10500 PSI / >72Mpa、 5CH degasser | 18 Kg | 550 mm(D)× 396 mm(W)× 196 mm(H) |

Better experience of sample delivery

- Integrated loop automatic sampler, lossless sampling, more suitable for small volume and micro-analysis
- Contact high-efficiency integrated cooling system, which can reach the set temperature range of 4℃ to room temperature in 30 minutes
- Overlapping sampling function to eliminate waiting time and achieve fast sampling cycle
- 4X sample tray, which can hold 216 (54*4) or 384 (96*4) positions to achieve higher throughput
- Multi-solvent cleaning options to effectively avoid cross-contamination; equipped with high-strength, long-life sampling needles



| Model | Performance Parameter | Weight | size |
|-----------------|--|--------|---------------------------------|
| A10 | Auto sampler, 9000 PSI | 22 Kg | 550 mm(D)× 396 mm(W)× 281 mm(H) |
| A20 | Auto sampler, 18000 PSI | 22 Kg | 550 mm(D)× 396 mm(W)× 281 mm(H) |
| A50 | Auto sampler, 9000 PSI, high injection volume till 1ml | 22 Kg | 550 mm(D)× 396 mm(W)× 281 mm(H) |
| A60 | Auto sampler, 9000 PSI, Integral-Loop | 23 Kg | 550 mm(D)× 396 mm(W)× 281 mm(H) |
| A65 | Auto sampler, 18000 PSI, Integral-Loop | 23 Kg | 550 mm(D)× 396 mm(W)× 281 mm(H) |
| Manual injector | Manual injector With: 7725i, 20ul loop, valve holder, syringe. | 0.5Kg | 130mm(D)×185 (W) ×95mm(H) |
| A10C | Auto sample Inhalation 9000PSI, Standard # with cooling function | 26 Kg | 718 mm(D)×396 mm(W)× 281 mm(H) |
| A20C | Auto sample Inhalation18000PSI # cooling function | 26 Kg | 718 mm(D)×396 mm(W)× 281 mm(H) |
| A50C | Auto sample Inhalation9000 PSI, Mass injection 1mL # cooling function | 26 Kg | 718 mm(D)×396 mm(W)× 281 mm(H) |
| A60C | Auto sampler Integral-Loop 9000 PSI, 4X sample tray, 100uL quantitative pump # cooling function | 24 Kg | 718 mm(D)×396 mm(W)× 281 mm(H) |
| A65C | Auto sampler Integral-Loop Integral-Loop, 4X sample tray, 100uL quantitative pump # cooling function | 24 Kg | 718 mm(D)×396 mm(W)× 281 mm(H) |



Excellent detection performance for more reliable results

Diode Array Detector

1024 Pixels, providing a wavelength range of 190~800nm; reference wavelength eliminates background interference, and has a drift correction function.

Slit widths of 1.2nm and 8nm are optional, which can output high-resolution spectra and obtain more accurate monitoring data.

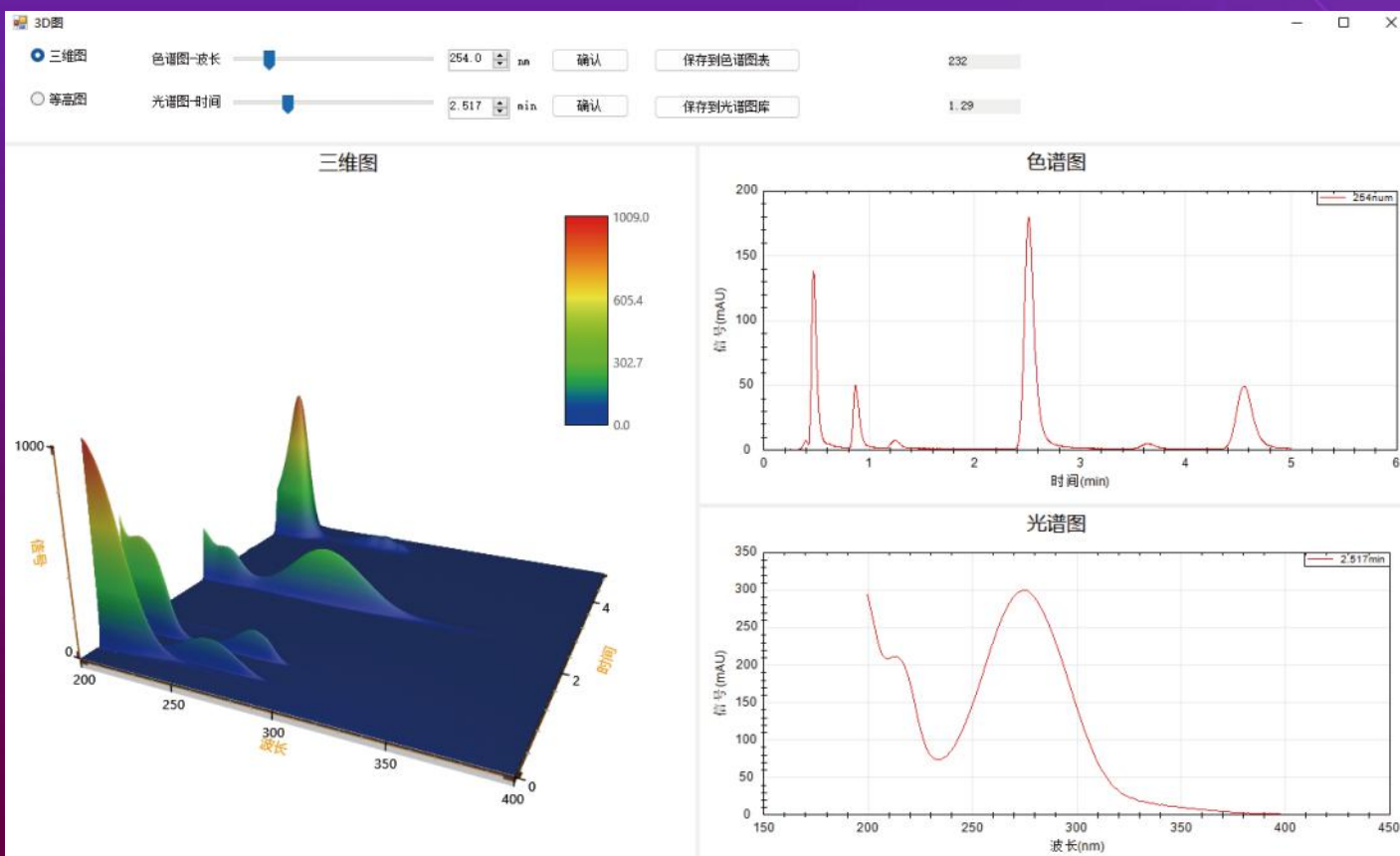
Simultaneously monitor 12 channels of wavelengths, and all channel sample wavelengths, sample bandwidths, reference wavelengths, and reference bandwidths can be freely selected.

3D spectral monitoring and peak purity calculation functions.



Ultra-high sensitivity, low dispersion total reflection flow cell

Optical path length matches ultra-high performance analysis requirements

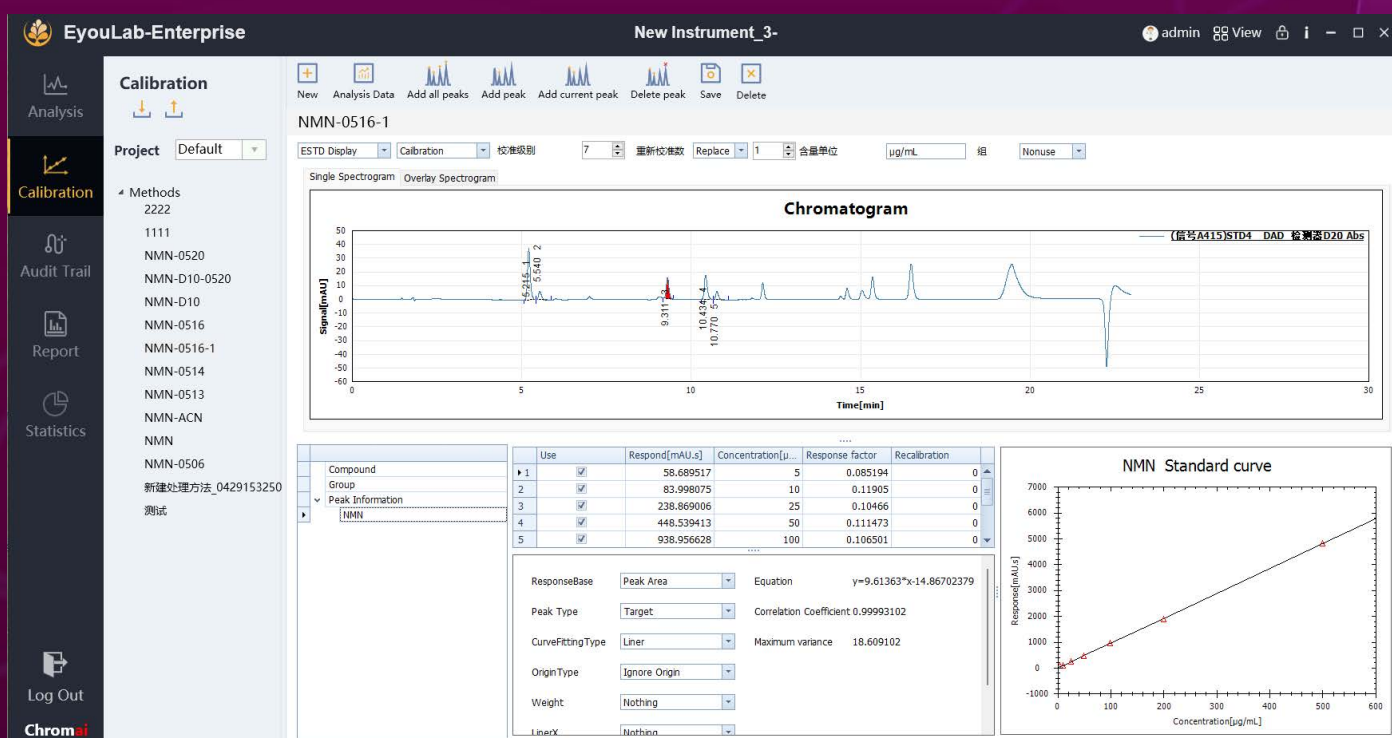


*Adaptable to multiple detector types

| Model | Performance Parameter | Weight | size |
|-------|--|--------|---------------------------------|
| D08 | UV-vis detector 190nm-640nm | 15 Kg | 550 mm(D)× 396 mm(W)× 196 mm(H) |
| D10 | UV VIS Detector 190nm-900nm | 15 Kg | 550 mm(D)× 396 mm(W)× 196 mm(H) |
| D15 | UV VIS Detector 190nm-900nm | 15 Kg | 550 mm(D)× 396 mm(W)× 196 mm(H) |
| D20 | Diode Array Detector 190nm-640nm | 18 Kg | 550 mm(D)× 396 mm(W)× 196 mm(H) |
| D22 | Diode-array Detector 1024 pixels 190nm-800nm | 18 Kg | 550 mm(D)× 396 mm(W)× 196 mm(H) |
| D23 | Diode-array Detector 1024 pixels 190nm-640nm | 18 Kg | 550 mm(D)× 396 mm(W)× 196 mm(H) |
| D24 | Diode-array Detector 1024 pixels 190nm-800nm | 18 Kg | 550 mm(D)× 396 mm(W)× 196 mm(H) |
| D25 | Diode Array Detector 190nm-640nm Variable slit | 18 Kg | 550 mm(D)× 396 mm(W)× 196 mm(H) |

EyouLab CDS

The new generation EyouLab intelligent chromatographic data system is based on database technology for efficient and comprehensive management, fully complying with regulatory compliance requirements such as FDA 21CFR Part 11, GMP, GLP, etc. It has rich and powerful instrument control functions, and has been extended to sample pretreatment and precision medical fields. Through dozens of proprietary technologies, the controlled instruments have intelligent interaction, refined processes, and powerful data analysis capabilities, which can effectively guide customers to ensure that the required data can be effectively and accurately completed through simple operations. EyouLab provides multiple versions of deployment, including standalone, enterprise network, and cloud service versions, which can greatly enhance the overall capabilities of customer application laboratories. Through visual dashboards, data monitoring and management, online diagnosis and maintenance, and method library interaction calls can be achieved. Intelligent and user-friendly, reducing errors, and improving overall laboratory efficiency





Contact

UVTech

Add: 2nd Floor, Building 3, No. 1 Chaoqian Rd, Changping, Beijing, China PRC.

TEL:18613365565

MAIL: info@uvtech-cc.com